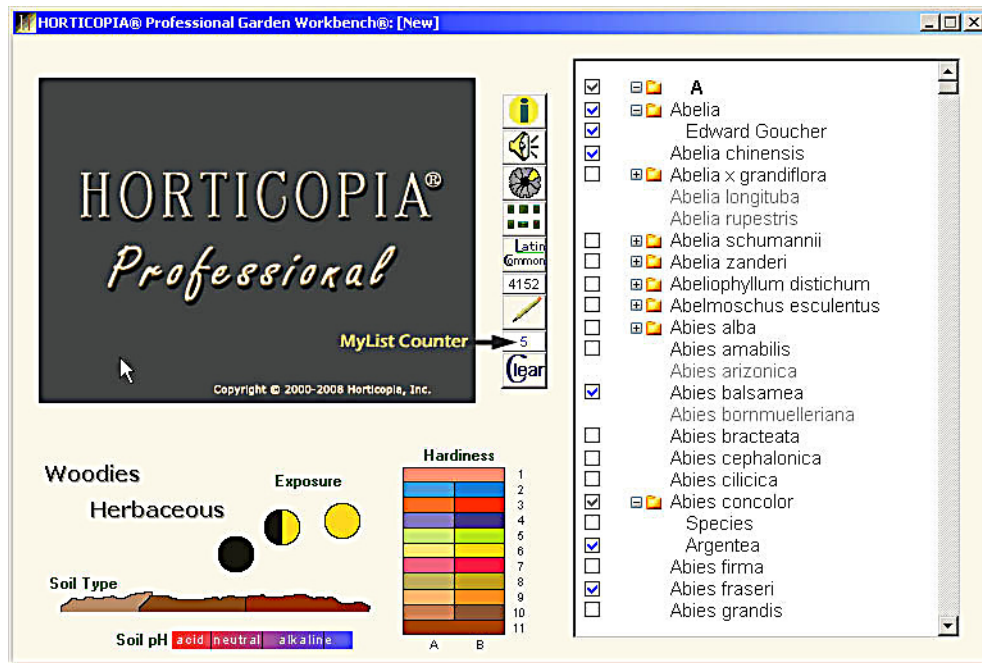



MyList®

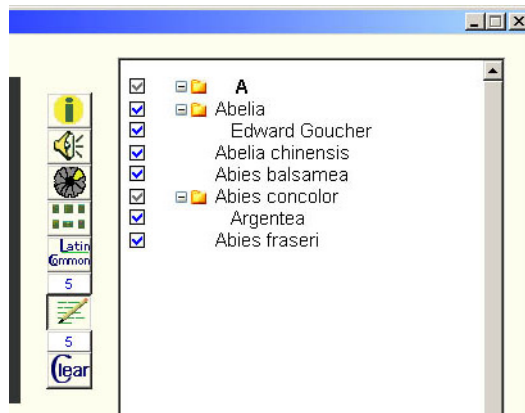
Create a new MyList® with the plants of your choice

1. To add a plant to your MyList, click on an empty box next to a plant or cultivar. If there is a folder next to the plant name, open the folder first.
2. **To remove a plant from your MyList**, click the box with a check next to the plant name.


Also, notice that the MyList counter under the MyList button  changes as you add/remove plants on your **MyList**.



After you have added several plants to your **MyList** by clicking on the boxes, you can click on the **MyList** button, , to view only the selections you have made.



Adding/Deleting plants to an existing MyList®

After opening a MyList, click on the MyList button  to see the entire plant list. You can then add or remove plants as described above and save your modified MyList.

Saving a MyList®

After adding the plants you want, you can save the MyList by clicking from the **File** menu, select **Save MyList as**. Choose a name and location for your list and click **Save**.

Retrieving a MyList®.

To retrieve a previously saved MyList, from the menu bar click on **File** select **Open MyList** and browse to your MyList.