

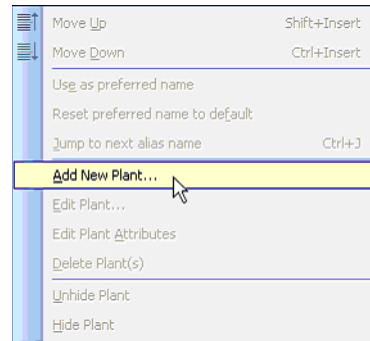
HORTICOPIA® Version V Authoring is Simple!

A 3-step process

1. Add your plant name.

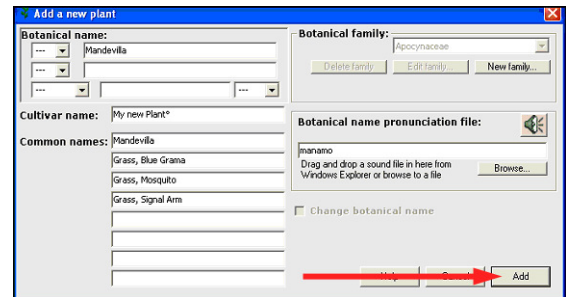
Right click on your base plant, a plant that is similar to your Authored Plant.

Select **“Add New Plant”**. For this example, we'll create a new plant, Mandevilla ‘My new Plant’, using Mandevilla x amoena ‘Alice du Point’ as the base plant.

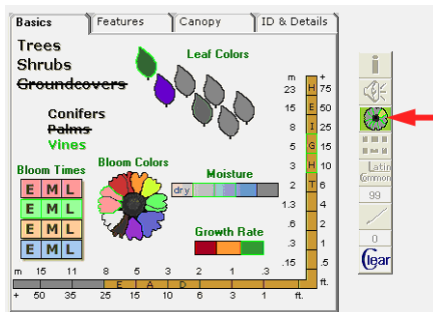


Enter the name of your Authored Plant.

Click the **Add** button in the right hand corner.



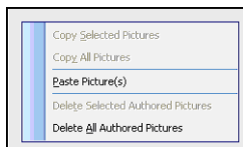
2. Next set the plant attributes.



Click or unclick the different **Attributes** for your new plant.

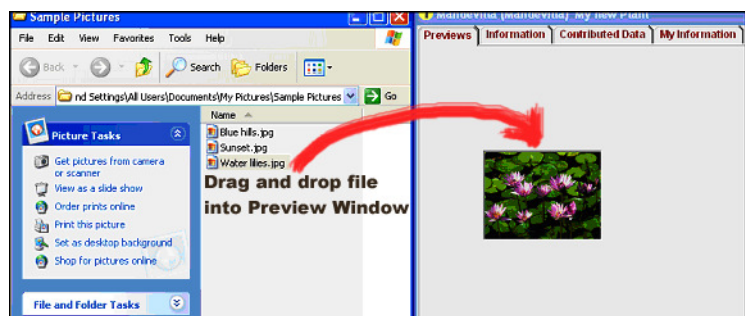
When you are finished, click the green **Attributes Button**.

3. Now add your pictures and data.



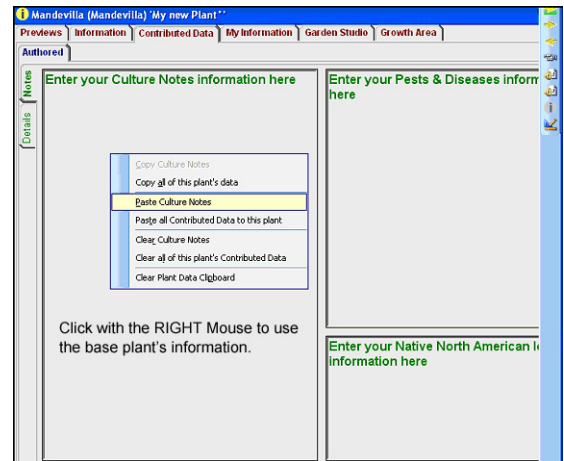
When the Preview Window appears, either **paste pictures** from your base plant by doing a **right mouse click** on a blank area of the Preview tab and select **“Paste Pictures”**,

Or click with the **left mouse** to **drag and drop** your own pictures.



Select the **Contributed Data** Tab and enter your information.

Or use the information from the base plant by clicking with the **right mouse** and select from the different options to **Paste** the information



Close the Plant Information Window to complete the authoring process.